

Regional External Affairs

GMA – Talk It Up Thursday

April 18th
National Lineworker
Appreciation Day
#ThankALineworker



Our heroes wear hard hats.





Projects

- Governmental Relocation Projects
- Outdoor Lighting Service

Programs

- Commercial
- Residential
- Make Ready

Conclusion

Governmental Relocation Project

Roadway Projects

- Payment will be based on the terms of the contract or franchise agreement, if applicable

Streetscape Projects

- Must provide an upfront payment for the estimated costs for Streetscape projects

Bikeways, Multiuse Trails, Public & Drainage

- Payment will be based on the terms of the contract or franchise agreement, if applicable

Overhead to Underground Conversion

- Must provide an upfront payment for the estimated costs



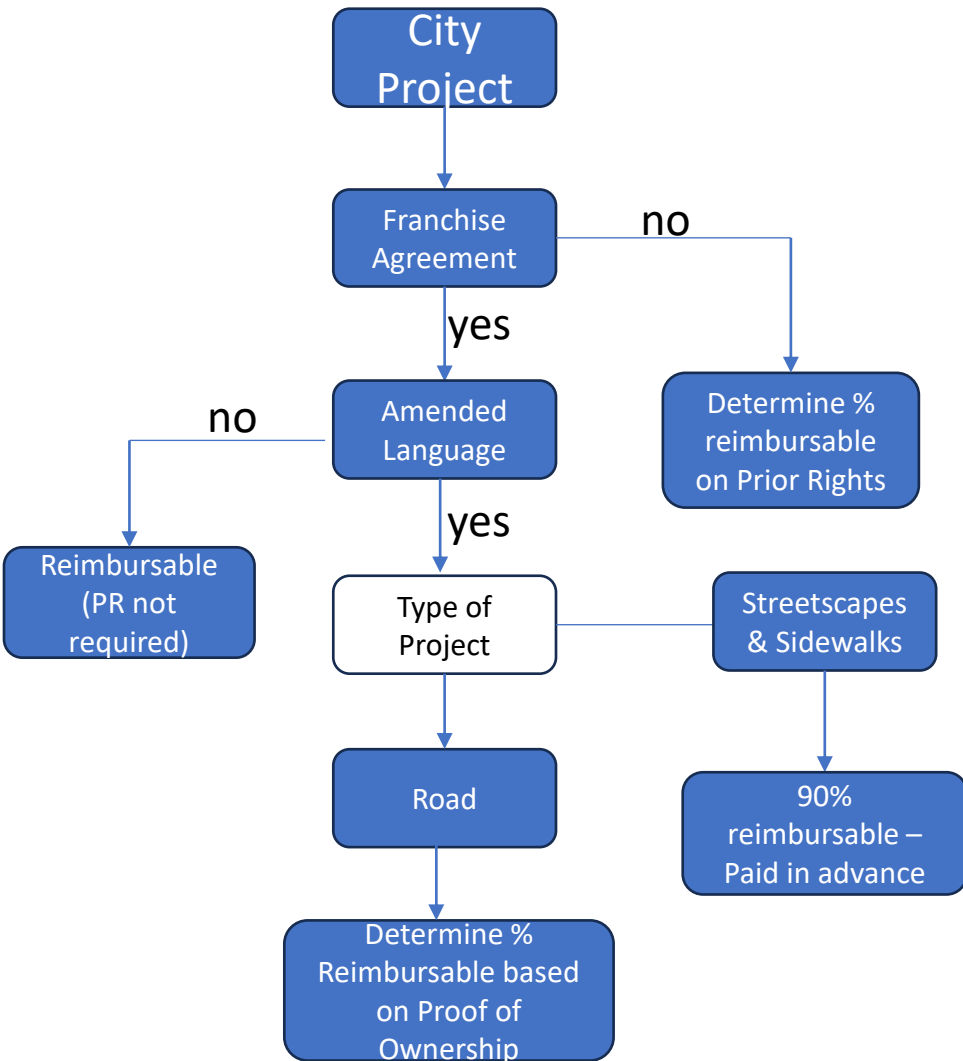
Governmental Relocation Project

Things to Consider

- Who is letting project
- Verify language in franchise agreement (if applicable) prior to determining type of agreement and reimbursement amount.
- Assume projects based on franchise agreements with amended language are reimbursable until City provides proof of ownership.
- Streetscape & sidewalk projects in cities with amended franchise agreement language must pay prior to construction and are given a 10% discount of total estimated cost.



Governmental Relocation Project



Binding and Non-Binding Estimate

Non-Binding Cost

Non-binding cost estimates will be provided at no cost to the customer.

Binding Cost

A **Not to Exceed** cost will be provided to the customer. The customer will be charged a fee for the estimate preparation.

City and County Permits

City

In Cities that have a franchise agreement, the agreement creates the right to use the streets, alleys, and public places of the City. A City may request that the Company file “Notice” of work under a city regulation requiring a permit.

Any “Notice” of work needs to be signed “Franchised Utility”, if applicable.

County

The Company will file a permit application, if required by the county, but should not pay any administrative fee during this time.

Joint Use of Distribution Poles

Before any pole attachment can be made, there are two basic requirements:

1. There must be a current, valid contract between the pole owner and the attacher applicable to the subject attachment(s); and
2. Make ready engineering and construction must be completed prior to the attachment being made.

Outdoor Lighting Services

What to Expect

- Georgia Power's outdoor lighting experts visit your facility
- Georgia Power will provide an outdoor lighting design and proposal

The proposal will detail:

- advantages of the new plan and LED lighting
- reduced maintenance requirements
- lower energy usage and improved lighting uniformity and color clarity
- provide a safer environment for employees and improved visibility for personnel and community



Outdoor Lighting Services

Light Up the Night initiative with the City of Atlanta

- Georgia Power installed over 11,000 LED lights in 2022
- YE 2024 we plan to have completed over 30,000 lights within the City of Atlanta

Benefits

- Streets are brighter and safer
- Reduced energy cost
- Providing an estimated 40% reduction in the city's lighting energy usage
- Reduced carbon footprint – 4,000 tons



Energy Efficiency Program Background

Energy Efficiency helps us manage demand and deploy a resilient grid

- Our Energy Efficiency programs are a part of our Demand Side Management (DSM) Plan. And our DSM plan is a part of our Integrated Resource Plan (IRP).
- The IRP helps us determine with the Georgia Public Service Commission (PSC) how we will serve millions of customers through the state of Georgia

Commercial Energy Efficiency Program



GPC was ranked third-highest in North America based on reported kWh savings among the 36 utilities running a C&I portfolio.



Commercial Energy Efficiency Program

Equipment Categories

- Our Programs are for Georgia Power commercial customers only. Industrial customers are not eligible.
- Georgiapower.com/ceep



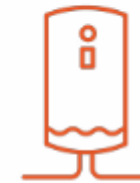
Existing Building Lighting



New Construction Lighting*



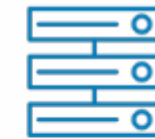
Heating & Cooling



Water Heaters



Food Service & Grocery



Business Equipment



Pumps



Custom Equipment & Building Tune Up

Residential Energy Efficiency Program

- Thermostat Energy Management Program (TEMP✓)™
 - Georgiapower.com/tempcheck
- Refrigerator Recycling+ Program
 - Georgiapower.com/fridge
- Lighting Program
 - Georgiapower.com/lighting
- Home Energy Improvement Program
 - Georgiapower.com/homeimprovements
- Energy Assistance for Savings & Efficiency (EASE) Program
 - Georgiapower.com/ease

Make Ready Infrastructure Program

Georgia Power will invest in and own the needed infrastructure to support your charging stations

Requirements:

- Public Facing Installation (Accessible & Serving the Public)
- 6 or more Level 2 chargers or 1 DC fast charger
 - [Georgiapower.com/makeready](https://georgiapower.com/makeready)

Thank you

