



Geospatial Information Office

The mission of the Geospatial Information Office is to coordinate, promote, and enhance the development and use of spatial information to continuously enable all levels of government throughout the State to make better informed decisions.

GIO Clients/Constituents

State Level

- Georgia's Cities
- Georgia's Counties
- Regional Government
- State Agencies / Authority
- State Organizations / Groups
- Political Leadership
- State Higher Level Education
- Private Sector

National Level

- Federal Agencies / Authorities
- National Organizations / Groups
- Private Sector

GIO (specific partners)

STATE LEVEL	REGIONAL LEVEL	NATIONAL LEVEL
<p>State Agencies / Authority</p> <ul style="list-style-type: none"> • Department of Agriculture • Department of Audits and Accounts • Department of Community Affairs • Department of Defense • Department of Economic Development • Department of Human Service • Department of Natural Resources • Department of Public Health • Department of Revenue • Department of Transportation • Environmental Finance Authority • Environmental Protection Division • Forestry Commission • Georgia Emergency Management Association • Georgia Technology Authority • Office of Planning & Budget • Regional Transportation Authority • Soil and Water Conservation Commission 	<p>State Organizations / Groups</p> <ul style="list-style-type: none"> • Georgia Association of Regional Commissions • Association County Commissioners of Georgia • Association of 911 Directors • Georgia Association of Assessing Officials • Georgia Association of Metropolitan Planning Organizations • Georgia Geospatial Advisory Council • Georgia Municipal Association • GIS Coordinating Committee • GIS Network <p>Political Leadership</p> <ul style="list-style-type: none"> • Governor's Office • State Legislators <p>State Higher Level Education</p> <ul style="list-style-type: none"> • Colleges/Universities • Technical Colleges 	<ul style="list-style-type: none"> • Atlanta Regional Commission • Central Savannah River Area Regional Commission • Coastal Regional Commission • Georgia Mountains Regional Commission • Heart of Georgia - Altamaha Regional Commission • Middle Georgia Regional Commission • Northeast Georgia Regional Commission • Northwest Georgia Regional Commission • River Valley Regional Commission • Southern Georgia Regional Commission • Southwest Georgia Regional Commission • Three Rivers Regional Commission
<p>Federal Agencies / Authorities</p> <ul style="list-style-type: none"> • Army Corps of Engineers • Department of Homeland Security • FEMA • National Oceanic & Atmospheric Administration • US Census Bureau • US Economic Development Administration • US Geologic Survey • US Park Service, BLM & USFWS • USDA / NRCS <p>National Organizations / Groups</p> <ul style="list-style-type: none"> • National States Geographic Information Council • Other State GIO's (Utah, Oregon, Arkansas, Alabama, Maryland, etc...) • Urban and Regional Information Systems Association <p>Private Sector</p> <ul style="list-style-type: none"> • Software, Hardware & Services Consultants/Vendors • Various Vertical Market Sectors.... 		

HOW IS GIS USED IN CITIES ACROSS GEORGIA?

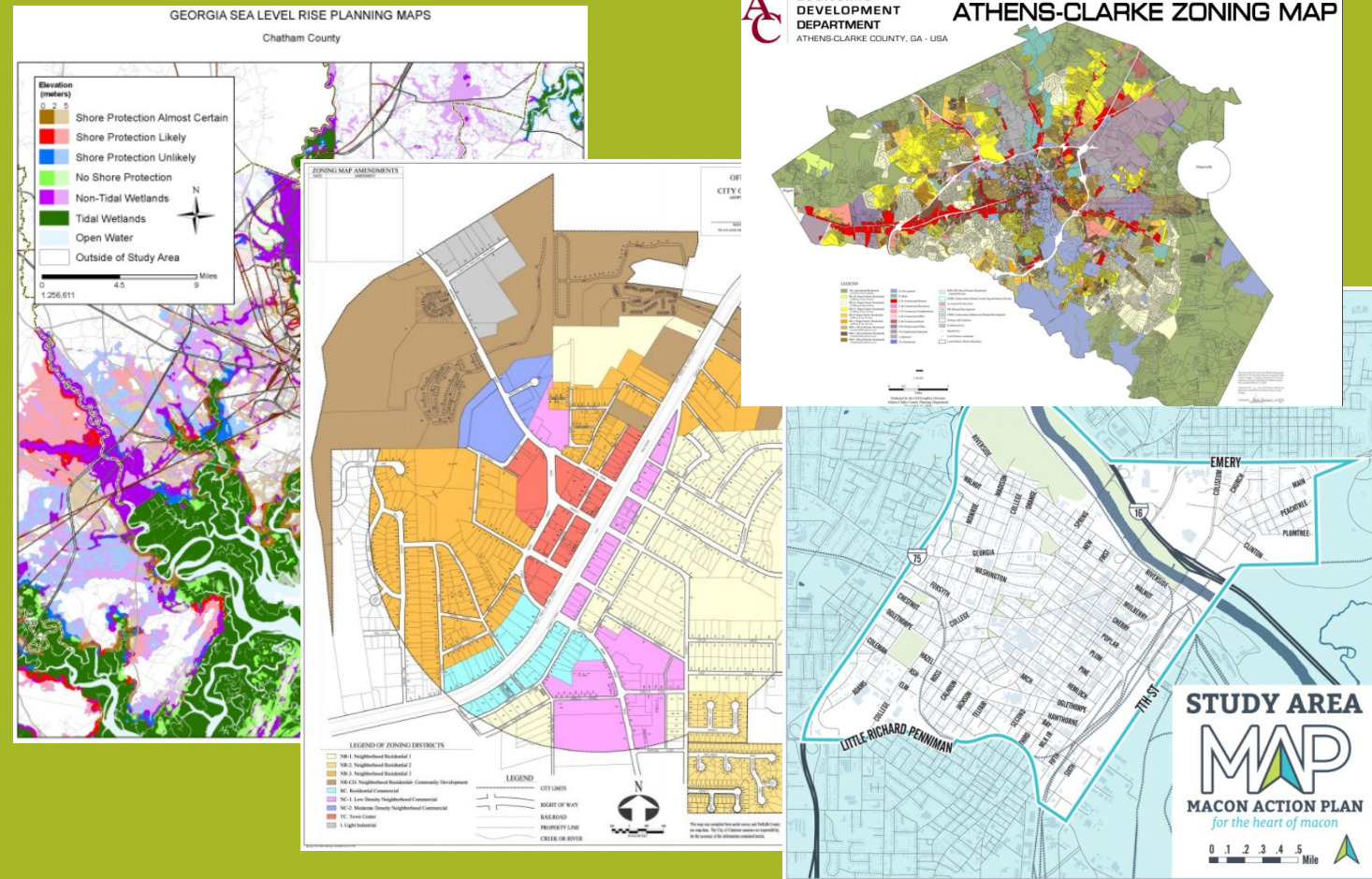
Some sample use cases

Planning and Development

Growth management plans, promote business diversity, attract talented citizens, and encourage quality places and environments for your cities & counties

...examples

- Transportation Planning
- Promote Vibrant Economies
- Encourage Orderly Growth
- Transform Blighted Properties
- Manage Community Events
- Photo Inventory Properties
- Notify Property Owners
- Manage Code Violations
- Review Proposed Developments
- Manage Address Information

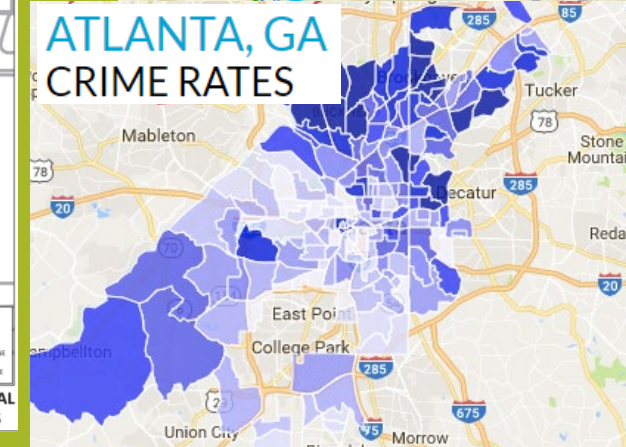
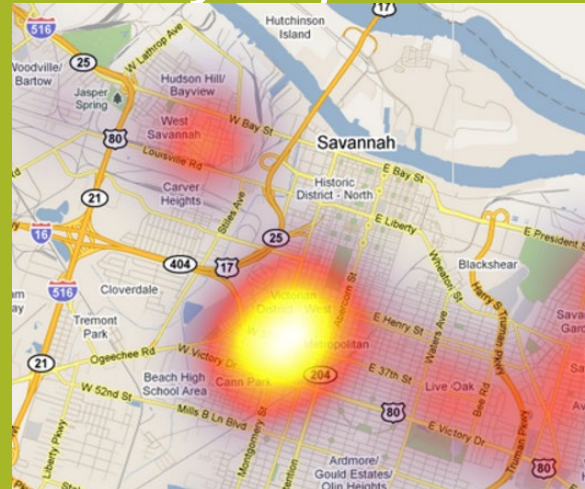


Law Enforcement

Understand trends, analyze the dynamics of incidents, collaborate with others, and allocate resources effectively to protect human life and property in your community

...examples

- Incident Heat Maps
- Create Crime Predictions
- Develop Tactical Plans
- Conduct Field Interviews
- Identify Transportation Hazards
- Manage Community Events
- Inventory Administrative Areas

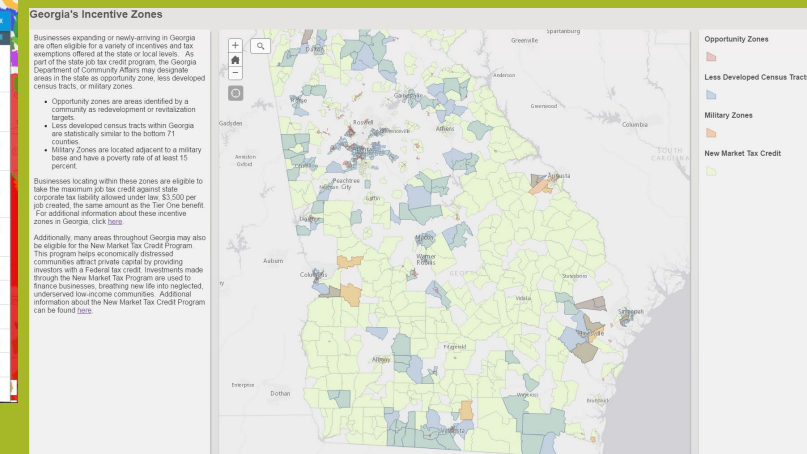
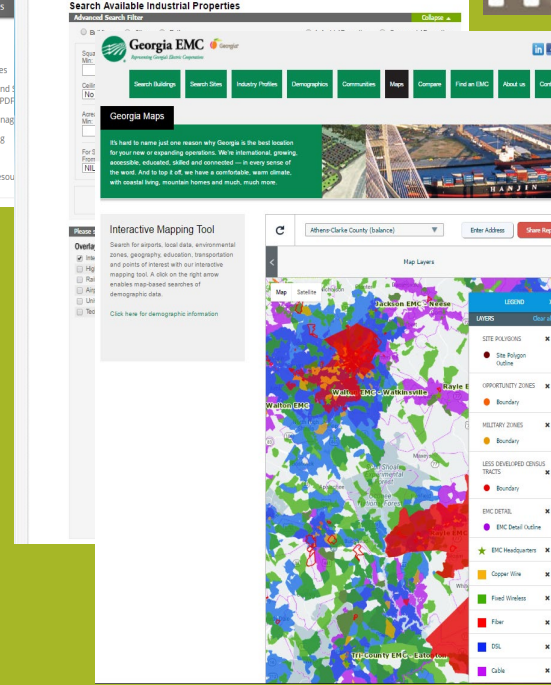
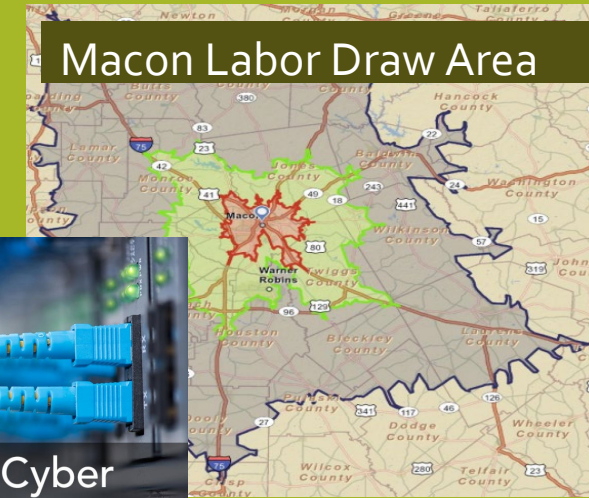


Economic Development

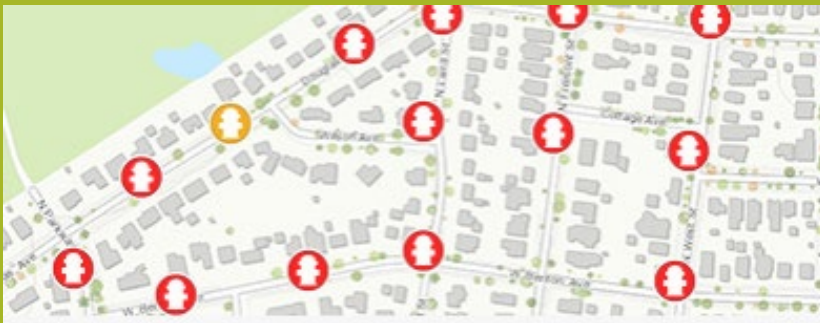
Market your cities & counties to potential citizens and businesses, promote enterprise zones, and provide a means for visitors to discover events and activities in your community

...examples

- Market Community Strengths
 - Live, Work, Locate
 - Quality of Life
 - Business/Demographic Characteristics
- Promote Business & Tax Incentives
- Promote Tourism, Film, Innovation, Trade...
- Collect and Review Properties for Sale or Lease
- Permit, coordinate, plan, and promote community or special events



Additional Applications



Fire Service

Leverage geographic information to analyze risk; develop pre-incident plans; and improve response activities that protect human life, property, and natural resources.



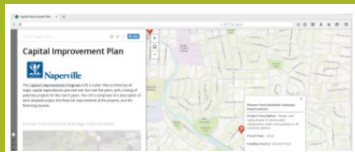
Water Utilities

Maintain comprehensive water distribution, sewer, and stormwater records; coordinate and plan capital projects; and improve the operation of utility networks that provide clean drinking water and protect public health.



Public Works

Maintain right of way assets; meet transportation and environmental quality needs; coordinate and plan capital projects; and operate parks, and government facilities in a safe and effective way.



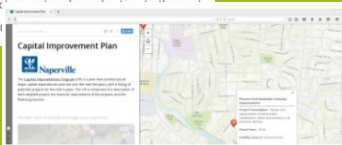
Develop Capital Plans

A collection of maps and apps used by public works staff to define and coordinate capital projects, engage external agencies, and share your capital improvement plan.



Plan Capital Projects

The Capital Improvement Planning solution can be used by water, sewer, and stormwater engineers to rate the condition of infrastructure of capital improvement projects.



Monitor Capital Projects

A collection of maps and apps used by public works staff to track project performance, and share project status with key stakeholders and citizens.

- Plan
- Engage
- Execute
- Monitor